

Sodium Glucose Co-Transporters Inhibitors as Better Alternative to Immunosuppressive Drugs in Management of Chronic Glomerulonephritis

Usama AA Sharaf El Din^{1,*}, Mona M Salem², Dina O Abdulazim³

¹*Nephrology Unit, Internal Medicine Department, School of Medicine, Cairo University, Egypt*

²*Endocrinology Unit, Internal Medicine Department, School of Medicine, Cairo University, Egypt*

³*Rheumatology and Rehabilitation Department, School of Medicine, Cairo University, Egypt*

ABSTRACT

Treatment of most cases of CGN is based, most of the time, on steroids and a wide scale of other immunosuppressive (IS) agents. In the last 2 years, the anti-diabetic sodium glucose co-transporters inhibitors (SGLT2Is) have shown a significant impact on the rate of progression of chronic renal disease. Many of the cases included in these studies were suffering from focal segmental glomerulosclerosis (FSGS) or IgA nephropathy (IgAN). These results should stimulate the Nephrologists to use SGLT2Is instead of IS agents in the management of different subtypes of CGN. This review illustrates the value of SGLT2Is in different types of CGN.

Keywords: Chronic Glomerulonephritis, Empagliflozin, Canagliflozin, Dapagliflozin, Focal Segmental Glomerulosclerosis, FSGS, IgA Nephropathy, Membranoproliferative Glomerulonephritis, MPGN, Membranous Glomerulonephritis, MGN, Lupus Nephritis, LN

ABBREVIATIONS

AAV: ANCA Associated Vasculitis; ACEi: Angiotensin-Converting Enzyme Inhibitors; AMPK: Adenosine Monophosphate Kinase; ANCA: Anti-Neutrophil Cytoplasmic Antibody; ARB: Angiotensin Receptor Blockers; ATII: Angiotensin II; ATP: Adenosine Triphosphate; ATPase: Enzyme That Cleaves ATP; CGN: Chronic Glomerulonephritis; CKD: Chronic Kidney Disease; Dapa: Dapagliflozin; DCT: Distal Convoluted Tubules; DKD: Diabetic Kidney Disease; ECM: Extracellular Matrix; eGFR: Estimated Glomerular Filtration Rate; EMPA: Empagliflozin; EMT: Epithelium Mesenchyme Transition; EnMT: Endothelium Mesenchyme Transition; ESRD: End-Stage Renal Disease; FAO: Fatty acid oxidation; FSGS: Focal Segmental Glomerulosclerosis; GN: Glomerulonephritis; HIF: Hypoxia-Inducible Factor; IgAN: IgA Nephropathy; IS= Immunosuppressive or Immunosuppression; LMW: Low Molecular Weight; LN: Lupus

Vol No: 06, Issue: 02

Received Date: March 25, 2024

Published Date: May 24, 2024

*Corresponding Author

Prof. Usama AA Sharaf El Din

Nephrology Unit, Internal Medicine Department,
School of Medicine, Cairo University, 58th
Abbas El Akkad St., Nasr City, Cairo, Egypt, Tel:
+201016862000, Fax: +20222753890,

E-mail: usamaaas@gmail.com

Citation: Sharaf El Din UAA, et al. (2024). Sodium Glucose Co-Transporters Inhibitors as Better Alternative to Immunosuppressive Drugs in Management of Chronic Glomerulonephritis. Mathews J Urol Nephrol. 6(2):19.

Copyright: Sharaf El Din UAA, et al. © (2024). This is an open-access article distributed under the terms of the Creative Commons Attribution License, which permits unrestricted use, distribution, and reproduction in any medium, provided the original author and source are credited.

Nephritis; MCN: Minimal Change Nephrotic Syndrome; MCP1: Monocyte Chemoattractant Protein; MGN: Membranous Glomerulonephritis; MiRs: MicroRNAs; MPGN: Membranoproliferative Glomerulonephritis; mTOR: Mammalian Target of Rapamycin; NAD: Nicotinamide Adenine Dinucleotide; NADPH: Nicotinamide Adenine Dinucleotide Phosphate; Nalp3= Inflammasome (a well characterized mediator of inflammation); NHE: Sodium Hydrogen Exchangers; PCT: Proximal Convoluted Tubule; PDGF- β : Platelet-Derived Growth Factor β ; PKC: Protein Kinase C; PPARs: Peroxisome Proliferator-Activated Receptors; RAS: Renin Angiotensin System; RNA: Ribonucleic Acid; ROS: Reactive Oxygen Species; SGLT2Is: Sodium Glucose Co-Transporters Inhibitors; SIRT1: Sirtuin 1; smad3: A gene that provides instructions for making a protein involved in transmitting chemical signals from the cell surface to the nucleus; TGF- β : Transforming Growth Factor- β ; TIF: Tubulointerstitial Fibrosis; UA: Uric Acid; UAE: Urine Albumin Excretion; VEGF: Vascular Endothelial Growth Factor; Wnt proteins: A group of proteins that comprise a major family of signaling molecules.

INTRODUCTION

Primary or secondary GN is the sequence of autoimmune disease, systemic infection, malignancy, or exposure to medications, chemicals, or poisons. GN comes as the 3rd frequent cause of ESRD after diabetes mellitus and systemic hypertension. On the other hand, GN is the most common cause in children, teenagers, and young adults [1]. The established treatment of GN in many cases of GN is steroids and other IS treatments. This applies mainly to lupus nephritis (LN), anti-neutrophil cytoplasmic antibody (ANCA) associated GN, minimal change nephrotic syndrome (MCN), membranoproliferative glomerulonephritis (MPGN), primary focal segmental glomerulosclerosis (FSGS), IgA nephropathy (IgAN), and membranous glomerulonephritis (MGN). In many of these cases, steroids and other IS drugs are used for long duration and sometimes lifelong [2]. This treatment carries a high risk of adverse effects including opportunistic infections, metabolic bone disease, development of diabetes mellitus, weight gain, systemic hypertension, psychosis, gastritis, duodenitis, gastroduodenal erosions or ulcerations, cataracts, and cardiovascular disease. The rate of opportunistic infection in GN patients treated with steroids and /or other IS drugs exceed 5 folds the rate in those not exposed to such treatment

[3]. In addition, patients suffering from heavy non-selective proteinuria suffer an increased chance of opportunistic infection secondary to the urinary loss of immunoglobulins [4]. For these reasons, a careful balance of the risk and benefits should be weighed before using these agents in individual GN subtypes.

A couple of years ago, the Dapagliflozin (Dapa) in Patients with Chronic Kidney Disease (DAPA-CKD) study was prematurely terminated thanks to the significant results that demonstrated for the first time that DAPA (a member of SGLT2Is) reduced the sustained decline of e GFR by >50%, ESRD, and overall mortality in non-diabetic chronic kidney disease patients by 39%. This favorable effect was not associated with an increase in the incidence of adverse events in comparison to the placebo [5]. Urine albumin excretion (UAE) decreased by 15% in non-diabetic patients assigned to DAPA [6]. The addition of DAPA to the established treatment regimen of a male patient suffering from FSGS succeeded in the reduction of UAE in this patient [7]. EMPA-kidney study confirmed the significant reduction in the progression of kidney disease and cardiovascular mortality in patients with either diabetic kidney disease (DKD) or non-diabetic chronic kidney disease (CKD). Results were consistent regardless of the estimated glomerular filtration rate (eGFR). Empagliflozin (EMPA) exerted an equally favorable effect in diabetic and non-diabetic patients. EMPA-kidney followed 6609 patients for a median of two years. Again, EMPA did not increase the rate of serious adverse events compared to the placebo [8]. Many of the non-diabetic CKD patients in DAPA-CKD and EMPA-Kidney studies had FSGS and IgA nephropathy. In this review, we will discuss the different mechanisms that underlie the progression of GN to ESRD and illustrate the mechanisms that make SGLT2Is a safer alternative to steroids and other IS in the management of different types of GN.

METHODS

In this review we used Pubmed to look for articles concerned with pathophysiology of different subtypes of CGN, the impact of different components of the nephron on CKD progression, the renal handling of different plasma proteins, the role of renal metabolism in CKD progression, the different mechanisms accused in renal fibrosis, the role of SGLT2Is in handling the different mechanisms involved in glomerular and tubulointerstitial inflammation, degeneration and fibrosis and the role of renal hypoxia.

Pathogenesis of GN progression

Role of Proteinuria

Proteinuria is a strong independent predictor of CKD progression and ESRD. The glomerular barrier is composed of 3-layers, the endothelium, the glomerular basement lamina, and the podocytes' foot processes. Glomerular proteinuria is consequent to either increased intraglomerular hydrostatic

pressure or glomerular barrier damage. Albumin filtered through the glomerulus is reabsorbed by the PCT through receptor-mediated endocytosis. This is followed by transport into lysosomes for degradation. Megalin and cubilin are the multi-ligand receptors responsible for tubular albumin uptake. Megalin delivers albumin to the lysosomes within PCT cells (Figure 1 & 2).

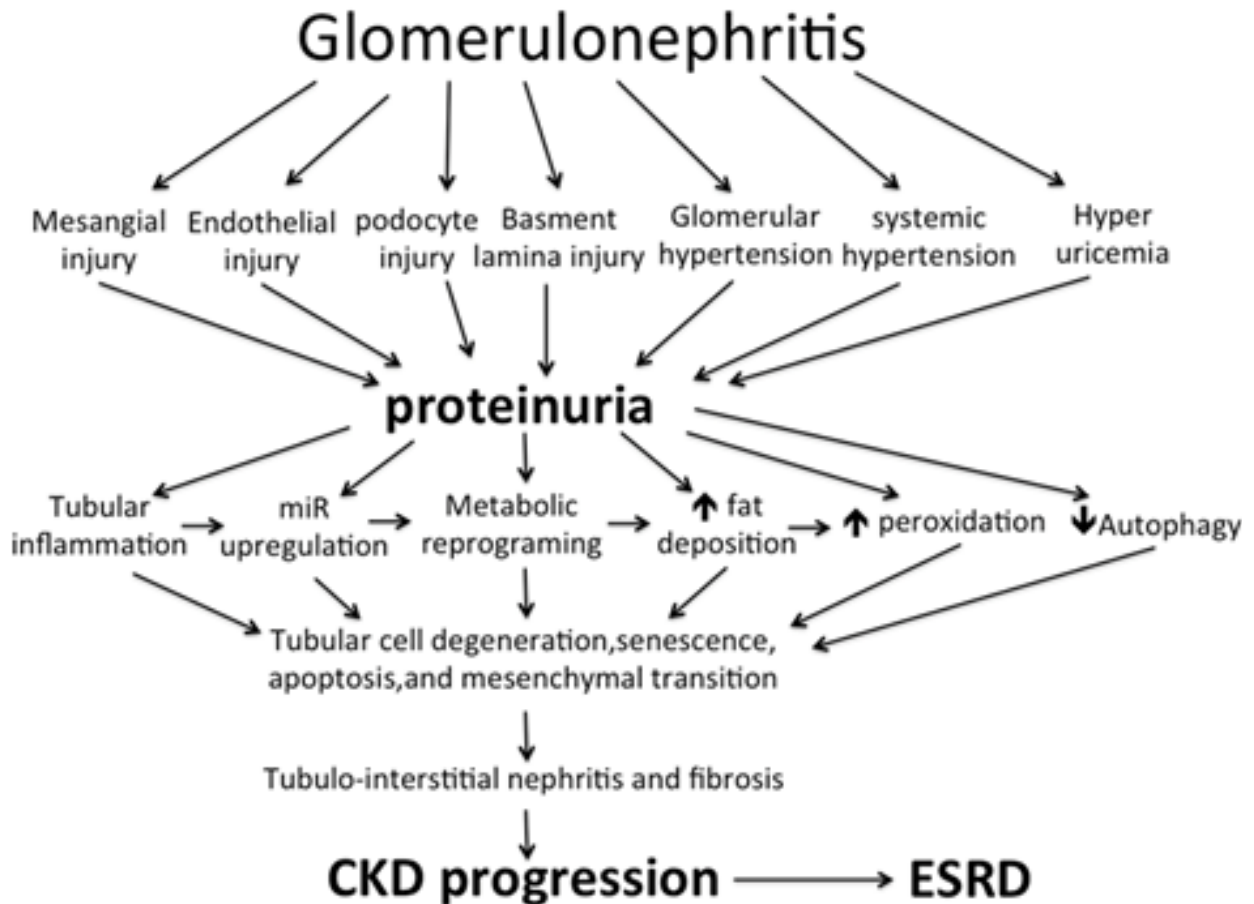


Figure 1. Mechanism of chronic kidney progression in patients suffering chronic glomerulonephritis. miR= micro RNA; CKD= chronic kidney disease; ESRD= end stage renal disease. SGLT2Is combat different renal cells injury, glomerular hypertension, systemic hypertension, hyperuricemia, tubular cell inflammation, miR upregulation, metabolic reprogramming, fatty infiltration, free oxygen radical injury, and induce autophagy.

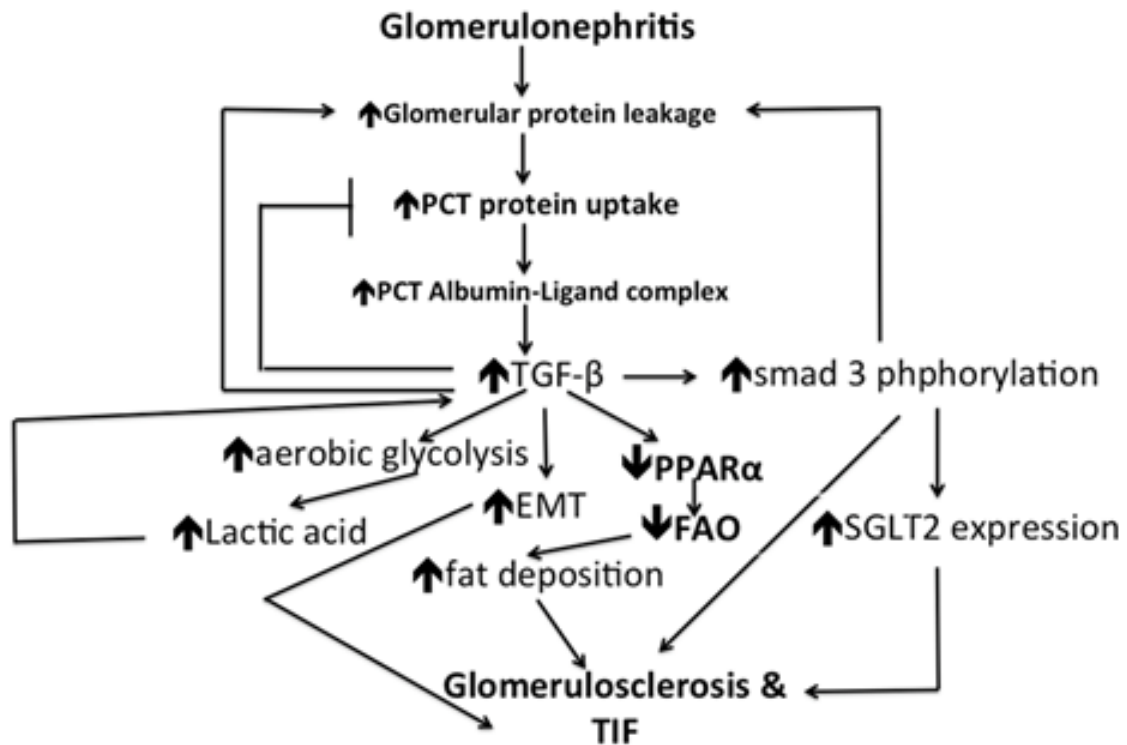


Figure 2. Interplay between increased glomerular protein leakage, TGF- β , metabolic reprogramming, and consequent glomerular or tubulointerstitial fibrosis. PCT= proximal convoluted tubule; TGF= transforming growth factor; PPAR= peroxisome proliferator-activated receptors; EMT= epithelial mesenchyme transition; FAO= fatty acid oxidation; SGLT2= sodium glucose co-transporter2; TIF= tubulointerstitial fibrosis.

Low molecular weight (LMW) proteins are freely filtered at the glomerulus of normal kidneys. The filtered LMW proteins are almost completely actively reabsorbed by the PCT [9]. The normal kidneys leak about 9.6 g of LMW proteins and 3g of albumin. These proteins are completely reabsorbed by PCT [10]. Megalin dissociates from albumin after delivery to the lysosomes. This dissociation enables megalin to deliver more albumins from the tubular lumen. Hydrogen produced by ATPase in the lysosomes activates this dissociation. H+ATPase is inhibited by angiotensin II (ATII). Renal Angiotensin II increases in response to hyperglycemia or free oxygen radicals within the cytoplasm and is inhibited by renin-angiotensin system (RAS) blockers with a consequent increase of megalin availability to enhance tubular albumin absorption [11]. In the case of renal disease, protein leakage exceeds the tubular capability to reabsorb. Proteinuria indicates either an increased albumin leakage through the glomerular filtration barrier or tubular dysfunction. Albumin prevails in case of glomerular damage while LMW protein is the major constituent in case of tubular dysfunction [11]. Glomerular proteinuria occurs in

active glomerular disease, glomerular hyperfiltration, or in case of glomerular scarring [12]. Glomerular disease occurs as a sequence of inflammatory cell infiltration, the proliferation of glomerular cells, or podocytopathy secondary to nephrin or podocin defects.

Albumin-ligand complex induces the expression of inflammatory and fibrogenic mediators within the PCT cells. Transforming growth factor- β (TGF- β) is the most important of these mediators. TGF- β thus induced by albumin exposure stimulates expression of SGLT2 through smad3 phosphorylation [13]. TGF- β may also act in a feedback mechanism by increasing glomerular albumin leakage and inhibiting megalin- and cubilin-mediated albumin endocytosis. These actions will lead to increased urine albumin excretion (UAE) [14-16]. In addition, increased induction of chemokines and activation of cytokines and complement within PCT cells will lead to interstitial nephritis and fibrosis and consequent loss of kidney function [16]. Through stimulation of the SMAD pathway, TGF- β is responsible for glomerulosclerosis and renal interstitial fibrosis. SMAD3 plays an important role in

the pathogenesis of glomerulosclerosis and renal interstitial fibrosis in patients suffering from GN. In addition, proteinuria is highly SMAD3-dependent [17].

The selectivity of proteinuria has a significant impact on CKD progression. Non-selective proteinuria is more injurious. This might be related to the more potentially toxic proteins in the non-selective protein ultrafiltrate like complement proteins, immunoglobulins, and growth factors [12,16]. However, the byproducts of albumin breakdown within PCT cells can induce the dendritic cells to induce inflammation [18]. Higher proteinuria carries a higher likelihood of CKD progression [19-21].

Role of the PCT

Recent studies have focused on the PCT instead of the glomerulus and renal interstitium as the primary leader of CKD progression in most renal diseases including chronic GN. Although the kidneys get 25% of the cardiac output, the increased oxygen consumption by the PCT endangers the epithelium of these tubules to the risk of hypoxia. PCT epithelium has 2 evident criteria that render PCT cells vulnerable to injury. These cells are dependent on oxidative phosphorylation as the main source of energy produced by the packed mitochondria within these cells. These two criteria make PCT cells liable to degeneration and death if exposed to ischemia, hypoxia, oxidative stress, metabolic changes, and/or urinary obstruction [22,23]. Excess protein leakage through injured glomeruli with consequently increased protein absorption by PCT leads to tubular degeneration. Excess tubular protein absorption is associated with increased activity of heme oxygenase and monocyte chemoattractant protein (MCP1) [24]. Injured epithelial cells fail to produce enough vascular endothelial growth factor (VEGF). Deficiency of VEGF causes rarefaction of peritubular capillaries that lead to ischemia of PCT with consequent perturbation of tubular damage [22]. Initially, the response of PCT epithelium to GN includes disturbed metabolism, suppression of autophagy, de-differentiation, and cell cycle changes. This response starts as an adaptive reaction, but with the persistence of inflammation, this response can become maladaptive and promote tubulointerstitial fibrosis (TIF). TIF is the hallmark of CKD and the best predictor of ESRD [23]. Growth factors produced by damaged PCT cells include the transforming growth factor beta (TGF β), Wnt proteins, and platelet-derived growth factor β (PDGF- β). These growth factors stimulate

myofibroblast formation, proliferation, and extracellular matrix (ECM) production [22].

Role of Metabolic Reprogramming

The kidney comes after the heart at the rate of oxygen consumption. Adenosine triphosphate (ATP) consumption by the renal tubules is tremendous. The different active pumps involved in the reabsorption of most of the filtered water and valuable solutes and the elimination of different waste products consume this huge amount of ATP [19]. Fatty acid oxidation (FAO) and gluconeogenesis represent the main source of energy in PCT while the distal convoluted tubules (DCT) rely mainly on anaerobic glycolysis due to the low oxygen supply to these tubules [25]. The maintenance of healthy structure and function of the kidney is dependent on adequate energy metabolism. Metabolic reprogramming was first discovered in cancer cells that try to adapt to the changes in environmental conditions and to face the energy consumption and proliferation requirements and was globally described as the Warburg effect. Renal cells have recently demonstrated their capability of metabolic reprogramming which proved to play a pivotal role in the progression after kidney injury. Metabolic reprogramming involves disturbed glucose and lipid metabolism that manifests in patients progressing to ESRD [19]. In response to inflammation, PCT cells shift from oxidative phosphorylation to aerobic glycolysis of glucose (glycolysis in presence of adequate oxygen in contrast to anaerobic glycolysis). The switch to aerobic glycolysis reduces acetyl-CoA production, and thus increases the expression of fibrotic genes within the tubular epithelium, podocytes, and fibroblasts [26]. Decreased oxidative phosphorylation results in a decline in FAO with consequent accumulation of unused fatty acids and their storage as triglycerides. Excess cell fat induces epithelial degeneration [27-29]. The damage induced in renal tubular epithelial cells by metabolic reprogramming allows the recruitment of inflammatory cells to the renal interstitium. Consequently, these inflammatory cells produce numerous pro-inflammatory and pro-fibrotic cytokines. Macrophages and T lymphocytes constitute the majority of recruited inflammatory cells. The M1 macrophage subtype prevails in the case of activated aerobic glycolysis instead of the M2 subtype that prevails during normal oxidative phosphorylation [30]. T-cell infiltration occurs during kidney injury and may directly increase the inflammatory response, and the pro-fibrotic phenotype of macrophages [31]. Metabolic

reprogramming is closely related to the activation of T cells [32]. Metabolic changes promote epithelium mesenchymal transition [33]. In this process, epithelial cells that transform into fibroblasts produce an extracellular matrix to heal tissues injured by inflammation and stabilize the injured tubules [34]. Acute inflammation can recover, while persistent or severe inflammation leads to fibrosis. Fibrosis is irreversible and gradually leads to complete damage to the kidneys [35]. In addition to the injured parenchyma, the infiltrating inflammatory cells represent another source of the cytokines that influence metabolic reprogramming leading to renal fibrosis. TGF- β is the most eminent of these cytokines and was found to downregulate peroxisome proliferator-activated receptors (PPARs) that have a role in FAO [36], and causes the shift of glucose metabolism from oxidative phosphorylation to aerobic glycolysis despite of adequate oxygen supply. Aerobic glycolysis is a faster source of adenosine triphosphate (ATP) [37] and redirects carbon to the production of pentoses, nucleic acids, and non-essential amino acids such as glycine. 35% of the structure of Collagen is composed of glycine [26,38,39]. Lactic acid produced by glycolysis increases cytoplasm acidity that stimulates TGF β activity and thus a vicious cycle ensues [40]. The metabolic changes that occur as a consequence of inflammation are responsible for the observed abnormal cell proliferation, the extracellular matrix accumulation, the suppression of autophagy, and the increased apoptosis that are observed in CKD [41-43]. The vicious cycle ensued by TGF-B activation would render the initial activation of fibroblasts to continue autonomously independent of inflammation [33]. The positive feedback loop between hypoxia-inducible factor-1 α (HIF-1 α) and TGF- β represents a novel mechanism that promotes glomerulosclerosis and TIF [44,45].

The role of metabolic reprogramming was supported by the trial done by Zhao et al. Stimulation of FAO in this trial succeeded to suppress extracellular matrix (ECM) accumulation and fibrosis in human skin [46].

Role of Sirtuin 1 (SIRT1)

SIRT1 is a member of sirtuins, the class III family of nicotinamide adenine dinucleotide-(NAD) dependent histone deacetylases. It can inhibit intracellular inflammation and oxidative stress [47]. Sirt1 activation prevents mesangial proliferation in rats [48]. Within PCT cells, high basolateral glucose suppresses Sirt1 while SGLT2Is induce SIRT1 upregulation [49].

SGLT2Is can augment SIRT1 and bind to the mammalian

target of rapamycin (mTOR) in isolated cells and tissues even if these cells lack SGLT2. This phenomenon would explain the augmenting action of SGLT2Is on autophagy in different cells even if these cells were not subject to changes in environmental glucose [50]. Autophagy removes dysfunctional organelles from the cytoplasm. Accumulation of such dysfunctional organelles would affect ion channels and trigger cell inflammation. By stimulating autophagy, SGLT2Is would decrease the accelerated damage of podocytes, mesangial cells, endothelial cells, and renal tubular cells within the kidney [51].

Role of Hypoxia-inducible factor-1 α

Although HIF-1 is usually regulated by cellular oxygen tension, other elements of the inflammatory microenvironment were shown to influence its activity under normal oxygen conditions. TGF- β increases HIF-1 α protein stability and thus stimulates HIF-1 α accumulation and activity [52]. In cases of LN, intraglomerular HIF-1 α correlates with the renal activity index and the clinical manifestations of the disease [53]. HIF-1 α eminently accumulates within the glomerulus, PCT, and interstitium of LN patients. Similar findings were observed in kidneys surgically removed from IgAN patients [54].

MicroRNAs and Glomerulonephritis

As small non-coding ribonucleic acid molecules, MicroRNAs (MiRs) have a recognized role in post-transcriptional gene regulation. In pre-clinical and clinical studies, MiRs have demonstrated a role in the pathogenesis of GN and tubulointerstitial fibrosis [55]. They interfere with the protein synthesis run by the transcription of messenger RNA molecules or degrade the different RNA subtypes involved in protein synthesis. Therefore, miRs modulate the expression of the different proteins implicated in cell differentiation, proliferation, and apoptosis. So far, thousands of miR molecules were discovered in human beings. Different miRs are found in different human organs settled in different cells and in different diseases. Concerning GN, cases suffering from FSGS have shown increased expression of miR-193a, cases having ANCA-associated GN have shown increased expression of miR-155, while cases suffering from IgAN and LN have increased expression of miR-148b, and miR-148a-3p respectively [56]. Other studies disclosed elevated urinary miR-155 in IgAN [57]. miR-155 is accused in renal fibrosis even in cases of ureteric obstruction [58]. MiR-21 upregulation aggravates metabolic reprogramming within the PCT through

the silencing of PPAR-mediated FAO and the silencing of the genes responsible for reactive oxygen species inhibition [59].

Impact of SGLT2Is in GN (Clinical Trials)

While the administration of RAS blockers and IS treatment fail most of the time to prevent the progression of GN to ESRD, the DAPA-CKD study has demonstrated promising results. DAPA-CKD study included 104 patients that have biopsy-proven FSGS having eGFR 25–75 mL/min/1.73m², UAE 200–5000 mg/g, and were prescribed a stable dose of angiotensin-converting enzyme inhibitors (ACEi) or angiotensin receptor blockers (ARB) for at least 4 weeks before enrolment into the trial. These cases were randomized to either DAPA 10 mg or placebo. The primary outcome occurred less frequently and the rate of eGFR decline was lower in the DAPA group [60]. The DAPA-CKD study included 271 IgAN patients, a number that was never achieved in all known IgA trials. IgAN patients showed an unprecedented 71% reduction in the primary outcome [61]. These results indicate that SGLT2Is may be more beneficial than immunosuppression at least in IgAN patients.

DAPA 10mg was studied in 17 Chinese LN cases (16 females and one male, suffering from the disease for 7.3 ± 5 years, and having UAE 0.5-3g/day). DAPA was administered in addition to their standard of care treatment (prednisolone 16.3 ± 7.1 mg/day, 6 were on prednisolone >20 mg/day, 6 were on mycophenolate mofetil, 3 on cyclophosphamide, and 2 on tacrolimus). DAPA continued for 6 months. The safety profile of DAPA was acceptable. Despite being administered on top of other IS treatments, the patients did not experience an increased propensity to infections. The rate of eGFR decline showed appreciable improvement after the DAPA administration [62].

Although patients with AAV and LN were excluded from DAPA-CKD and EMPA-kidney trials, a specific targeted therapy combined with SGLT2Is in these patients deserves a trial in these patients. AAV and LN patients have a significantly increased risk for cardiovascular morbidity and mortality. Renal involvement, systemic inflammation, and long-term use of IS contribute to this risk. SGLT2Is use in these patients may alleviate systemic inflammation, decrease the need for IS, and hamper the progression of CKD and thus would have a positive effect on patient outcomes in these patients like other forms of GN [63]. On revising the literature, there are no studies, so far, performed in AAV.

Mechanisms of Renal Protection of SGLT2Is in GN

SLC5 is a family of carriers in different tissues that are responsible for the active transport of different sugars, anions, vitamins, and short-chain fatty acids coupled with sodium [64]. Sodium-glucose co-transporters (SGLTs) are members of the SLC5 family. In the PCT SGLT2 are located in S1 and S2 segments and are responsible for the absorption of 90% of glucose delivered to PCT, while SGLT1 are located in the S3 segment and absorb the remaining 10%. SGLT2Is inhibit glucose and sodium in PCT. While the primary renoprotective action of SGLT2Is is mediated through their tubular action, they have many other actions that ameliorate the downstream injury from the original glomerular damages. These potential renoprotective mechanisms include (1) Inducing diuresis and natriuresis through inhibition of SGLTs and the renal sodium-hydrogen exchanger3 (NHE3) isoform. This effect is mainly through NHE3 inhibition. Empa fails to induce natriuresis in normoglycemic NHE3 knock-out mice [65]. (2) Increased sodium delivery to DCT stimulates increased active sodium absorption by DCT. Increased consumption of ATP by DCT leads to increased adenosine production with consequent afferent arteriolar vasospasm, normalization of tubuloglomerular feedback, and a decrease in glomerular hyperfiltration [51]. (3) By decreasing the oxygen consumption in the PCT, SGLT2Is decrease the chance of HIF-1 α expression and thus decrease inflammation and fibrogenesis [66]. HIF-1 α expression is upregulated within FSGS kidneys. This may explain the favorable impact of SGLT2Is in FSGS patients [67]. (4) Increased sodium delivery to DCT stimulates excess active sodium absorption in this segment. The increased demand for ATP leads to hypoxia in DCT that increases induction of HIF-1 β with consequently increased erythropoiesis, decreased inflammation, and fibrogenesis [68]. (5) Reduction of glucose uptake, even in normoglycemic patients [69] augments AMPK/SIRT1 signaling and stimulates autophagy within the PCT, thereby decreasing the accelerated damage of renal tubular cells as well as podocytes [70,71]. AMPK Stimulation leads to mammalian target of rapamycin (mTORC1) inhibition. mTORC1 is responsible for podocyte and renal tubular damage, proteinuria, and renal fibrosis [72]. Although the SGLT2s' existence within human podocytes is still uncertain, the amelioration of proteinuria after the use of DAPA is associated with decreased effacement of foot processes [73]. (6) The presence of SGLTs in renal endothelial cells is controversial but accumulating evidence

suggests a direct action of SGLT2Is on these cells. SGLT2Is modulate the adhesion molecules and reduce production of inflammatory cytokines in these cells [74]. (7) SGLT2Is decrease Aldose reductase activity within PCT cells with a consequent decrease in intracellular fructose and uric acid (UA) synthesis [75]. Intracellular UA stimulates nicotinamide adenine dinucleotide phosphate (NADPH) oxidase which increases the production of reactive oxygen species (ROS). Increased intracellular UA and ROS activate Nalp3 which induces the activation of caspase 1 [76]. (8) Calorie depletion induced by SGLT2Is causes and simulates fasting or nutrient deprivation state leads to increased FAO, decreased hexosamine production, and decreased lipid accumulation. These metabolic changes suppress protein kinase C (PKC) and TGF β activation [51]. Suppression of PKC and TGF β decreases epithelial mesenchyme transition (EMT), endothelial mesenchyme transition (EnMT), interstitial nephritis, and

fibrosis. (9) Through inhibition of smad3 phosphorylation, SGLT2Is decrease glomerular protein leakage, and inhibit glomerulosclerosis, and interstitial fibrosis [77]. (10) Further reduction of ROS and improvement of FAO can be achieved by the improvement of miR signature by SGLT2Is [59]. (11) With the loss of some nephrons due to GN, the remaining nephrons compensate by glomerular hyperfiltration. The podocyte shear stress induced by the glomerular hyperfiltration ultimately leads to podocyte detachment, an increase in glomerular protein leakage, and secondary focal segmental glomerulosclerosis that gradually proceeds to diffuse global glomerulosclerosis [78,79]. The metabolic overload imposed over PCT cells promotes the irreversible loss of these cells and ultimately proceeds to tubule atrophy. These events lead to CKD progression and kidney loss [80]. SGLT2Is prevent these events (Figure 3 & 4).

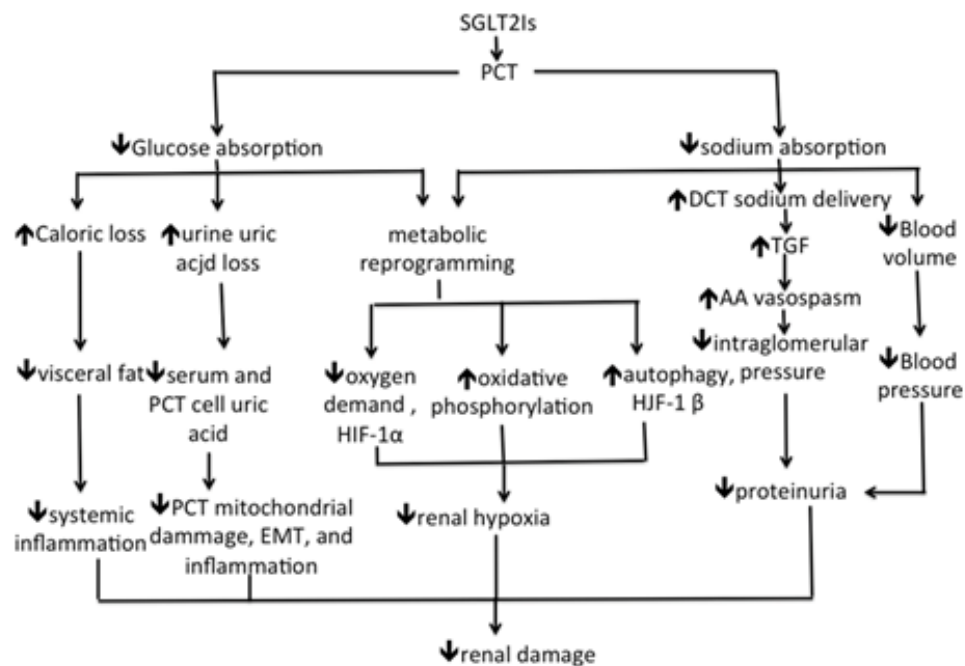


Figure 3. Mechanisms of action of sodium glucose transporters inhibitors (SGLT2Is) in cases of glomerulonephritis. PCT= proximal convoluted tubules; EMT= epithelial – mesenchyme transition; HIF= hypoxia inducible factor; DCT= distal convoluted tubules; TGF= tubuloglomerular feedback; AA= afferent arteriole

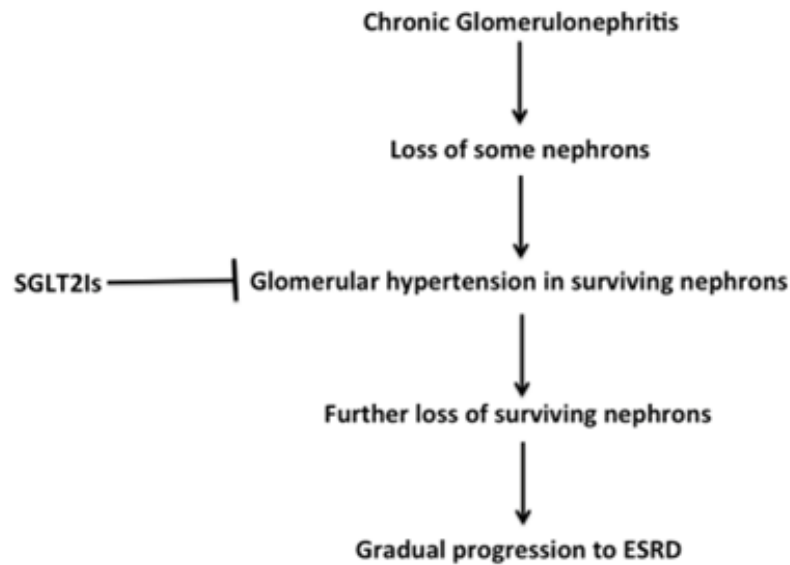


Figure 4. SGLT2Is combat chronic kidney disease progression through control of glomerular hypertension in the surviving nephrons

Mechanism of Action of SGLT2Is on Renal Cells Lacking SGLT2

SGLT2Is can induce nutrient deprivation signal and autophagy in different renal cells. Nutrient deprivation signal and autophagy lead to the reduction of cell stress, improved metabolism, and survival in these cells although they do not have SGLT2. Urine glucose loss even in normoglycemic patients stimulates a system-wide up-regulation of nutrient deprivation signal in different cells in the body. Administration of SGLT2Is for seven days reduces the glucose renal threshold from 196 to 22 mg/dl [81]. The nutrient deprivation signal does not depend on the presence or absence of cellular SGLT2 [82]. SGLT2Is stimulate ketogenesis. Ketone bodies and nutrient deprivation signal stimulate AMPK and decrease mTOR phosphorylation with a consequent increase in the expression of PPAR-1 α , increase in FAO, and promotion of autophagy [83].

In addition, SGLT2 was detected in podocytes of mice and was found to be upregulated after injection of these mice by bovine serum albumin [73]. SGLT2Is may also act directly on renal endothelial cells through modification of the effect of adhesion molecules and reduction of intracellular inflammatory cytokines and free oxygen radicals [74].

Adverse effects of SGLT2Is

In the DAPA-CKD trial, there was no discrepancy in the rate of serious adverse events in patients treated with DAPA versus the placebo group and DAPA was well tolerated. Severe hypoglycemia was not reported in non-diabetic CKD patients [5]. EMPA- kidney study disclosed nearly similar incidence of side effects in patients treated with EMPA in comparison to the placebo group [8]. For the fear of increased incidence of infections, the CKD patients treated with steroids and/or other IS drugs were excluded from these 2 studies. However, many small observational studies failed to observe an increased incidence of adverse events, including infections, in patients treated with the combination of SGLT2Is and IS drugs [84-86].

Perspectives

Despite of the tremendous efforts paid to the pharmacological interventions of GN, acute and chronic glomerular diseases still lead to substantial morbidity and mortality. Most of the time, glomerular pathology underlies the progression of CKD. This phenomenon can explain the prevailing focus on the glomerulus in CKD research as the target in the management of CKD progression. However, the tubular damage became more appreciated as the predictor of kidney function decline. The amazing favorable effect of SGLT2Is in controlling CKD

in DKD and non-diabetic CKD has fortified this impression. These agents offered a significant impact on both renal and patient survival. These results should make the use of SGLT2Is a mandate in these cases. In addition, this shift would increase the awareness of the renal tubules and interstitium as therapeutic targets in the management of GN. Therefore, it seems that a tandem glomerular and tubular therapeutic approach would be better for cases suffering from chronic GN.

The frequently used steroids and other IS agents in the management of chronic GN carry the potential risks of jeopardizing the quality of life of these patients and may accelerate mortality. The updated guidelines for the management of GN offered by the Kidney disease improved global outcome (KDIGO) in 2021 suggested the use of ACEi/ARBs as the first-line treatment in patients with GN, hypertension, and proteinuria. The ACEi/ARBs should be up-titrated according to the blood pressure response till the maximum dose tolerated is achieved [1]. These guidelines were issued before the disclosure of DAPA-CKD and EMPA-kidney results. It seems that SGLT2Is should be added to ACEi/ARBs to gain the optimal therapeutic benefit in the management of chronic GN patients. The introduction of SGLT2Is should be added on top of the maximum tolerable dose of ACEi/ARBs to all cases suffering GN. Expectedly, this approach will significantly negate or at least reduce the need for steroids and other IS agents. This approach is also more economic since SGLT2Is are much cheaper and safer than most IS treatments. A severe case that may still need IS treatment can be safely prescribed these agents on top of ACEi/ARBs and SGLT2Is. The doses of IS drugs in this situation would be, expectedly, much less than that in the time being. We still need further studies that look after the impact of the addition of fenofibrate to SGLT2Is and the maximum tolerable dose of ACEi/ARB on the outcome of GN in different ages.

ACKNOWLEDGEMENTS

None.

CONFLICT OF INTEREST

The authors have nothing to declare.

FUNDING

There is no funding source for this work.

AUTHORS CONTRIBUTION

The authors shared equally in the creation of this manuscript.

REFERENCES

1. Kidney Disease: Improving Global Outcomes (KDIGO) Glomerular Diseases Work Group. KDIGO 2021 Clinical Practice Guideline for the Management of Glomerular Diseases. *Kidney Int.* 2021 Oct;100(4S):S1-S276.
2. Ponticelli C, Villa M, Banfi G, Cesana B, Pozzi C, Pani A, et al. (1999). Can prolonged treatment improve the prognosis in adults with focal segmental glomerulosclerosis? *Am J Kidney Dis.* 34(4):618-625.
3. Fardet L, Petersen I, Nazareth I. (2016). Common Infections in Patients Prescribed Systemic Glucocorticoids in Primary Care: A Population-Based Cohort Study. *PLoS Med.* 13(5):e1002024.
4. Jefferson JA. (2018). Complications of Immunosuppression in Glomerular Disease. *Clin J Am Soc Nephrol.* 13(8):1264-1275.
5. Heerspink HJL, Stefánsson BV, Correa-Rotter R, Chertow GM, Greene T, Hou F, et al. (2020). Dapagliflozin in patients with chronic kidney disease. *N Engl J Med.* 383(15):1436-1446.
6. Heerspink HJL, Chertow GM, Jongs N, Correa-Rotter R, Rossing P, Sjöström CD, et al. (2022). Effects of Dapagliflozin in People without Diabetes and with Microalbuminuria. *Clin J Am Soc Nephrol.* 17(11):1665-1668.
7. Sjul S, Jensen U, Littmann K, Bruchfeld A, Brinck J. (2021). Effective cholesterol lowering after myocardial infarction in patients with nephrotic syndrome may require a multi-pharmacological approach: a case report. *Eur Heart J Case Rep.* 5(5):ytab151.
8. Herrington WG, Staplin N, Wanner C, Green JB, Hauske SJ, Emberson JR, et al. (2022). EMPA- kidney group Empagliflozin in Patients with Chronic Kidney Disease. *N Engl J.* DOI: 10.1056/NEJMoa2204233.
9. Tojo A, Endou H. (1992). Intrarenal handling of proteins in rats using fractional micropuncture technique. *Am J Physiol.* 263(4 Pt 2):F601-F606.
10. Tojo A, Kinugasa S. (2012). Mechanisms of glomerular albumin filtration and tubular reabsorption. *Int J Nephrol.* 2012:481520.

11. Andersen S, Blouch K, Bialek J, Deckert M, Parving HH, Myers BD. (2000). Glomerular permselectivity in early stages of overt diabetic nephropathy. *Kidney Int.* 58(5):2129-2137.
12. Kopp JB, Anders HJ, Susztak K, Podestà MA, Remuzzi G, Hildebrandt F, et al. (2020). Podocytopathies. *Nat Rev Dis Primers.* 6(1):68.
13. Panchapakesan U, Pegg K, Gross S, Komala MG, Mudaliar H, Forbes J, et al. (2013). Effects of SGLT2 inhibition in human kidney proximal tubular cells--renoprotection in diabetic nephropathy? *PLoS One.* 8(2):e54442.
14. Drumm K, Bauer B, Freudinger R, Gekle M. (2002). Albumin induces NF-kappaB expression in human proximal tubule-derived cells (IHKE-1). *Cell Physiol Biochem.* 12(4):187-196.
15. Cravedi P, Remuzzi G. (2013). Pathophysiology of proteinuria and its value as an outcome measure in chronic kidney disease. *Br J Clin Pharmacol.* 76(4):516-523.
16. Ruggenti P, Perna A, Mosconi L, Matalone M, Pisoni R, Gaspari F, et al. (1997). Proteinuria predicts end-stage renal failure in non-diabetic chronic nephropathies. The "Gruppo Italiano di Studi Epidemiologici in Nefrologia" (GISEN). *Kidney Int Suppl.* 63:S54-S57.
17. Ghayur A, Padwal MK, Liu L, Zhang J, Margetts PJ. (2019). SMAD3-dependent and -independent pathways in glomerular injury associated with experimental glomerulonephritis. *Am J Physiol Renal Physiol.* 317(1):F152-F162.
18. Macconi D, Chiabrando C, Schiarea S, Aiello S, Cassis L, Gagliardini E, et al. (2009). Proteasomal processing of albumin by renal dendritic cells generates antigenic peptides. *J Am Soc Nephrol.* 20(1):123-130.
19. Bhargava P, Schnellmann RG. (2017). Mitochondrial energetics in the kidney. *Nat Rev Nephrol.* 13(10):629-646.
20. Peterson JC, Adler S, Burkart JM, Greene T, Hebert LA, Hunsicker LG, et al. (1995). Blood pressure control, proteinuria, and the progression of renal disease. The Modification of Diet in Renal Disease Study. *Ann Intern Med.* 123(10):754-762.
21. Wright JT Jr, Bakris G, Greene T, Agodoa LY, Appel LJ, Charleston J, et al. (2002). Effect of blood pressure lowering and antihypertensive drug class on progression of hypertensive kidney disease: results from the AASK trial. *JAMA.* 288(19):2421-2431.
22. Chevalier RL. (2016). The proximal tubule is the primary target of injury and progression of kidney disease: role of the glomerulotubular junction. *Am J Physiol Renal Physiol.* 311(1):F145-F161.
23. Gewin LS. (2018). Renal fibrosis: Primacy of the proximal tubule. *Matrix Biol.* 68-69:248-262.
24. Motoyoshi Y, Matsusaka T, Saito A, Pastan I, Willnow TE, Mizutani S, et al. (2008). Megalin contributes to the early injury of proximal tubule cells during nonselective proteinuria. *Kidney Int.* 74(10):1262-1269.
25. Cargill K, Sims-Lucas S. (2020). Metabolic requirements of the nephron. *Pediatr Nephrol.* 35(1):1-8.
26. Li Y, Sha Z, Peng H. (2021). Metabolic Reprogramming in Kidney Diseases: Evidence and Therapeutic Opportunities. *Int J Nephrol.* 2021:5497346.
27. Walther TC, Chung J, Farese RV Jr. (2017). Lipid Droplet Biogenesis. *Annu Rev Cell Dev Biol.* 33:491-510.
28. Muroya Y, Ito O, Rong R, Takashima K, Ito D, Cao P, et al. (2012). Disorder of fatty acid metabolism in the kidney of PAN-induced nephrotic rats. *Am J Physiol Renal Physiol.* 303(7):F1070-F1079.
29. Kang HM, Ahn SH, Choi P, Ko YA, Han SH, Chinga F, et al. (2015). Defective fatty acid oxidation in renal tubular epithelial cells has a key role in kidney fibrosis development. *Nat Med.* 21(1):37-46.
30. Wei T, Gao J, Huang C, Song B, Sun M, Shen W. (2021). SIRT3 (Sirtuin-3) Prevents Ang II (Angiotensin II)-Induced Macrophage Metabolic Switch Improving Perivascular Adipose Tissue Function. *Arterioscler Thromb Vasc Biol.* 41(2):714-730.
31. Nikolic-Paterson DJ. (2010). CD4+ T cells: a potential player in renal fibrosis. *Kidney Int.* 78(4):333-335.
32. Ravi S, Mitchell T, Kramer P, Chacko B, Darley-Usmar VM. (2014). Mitochondria in monocytes and macrophages--implications for translational and basic research. *Int J Biochem Cell Biol.* 53:202-207.

33. Zhu X, Jiang L, Long M, Wei X, Hou Y, Du Y. (2021). Metabolic Reprogramming and Renal Fibrosis. *Front Med (Lausanne)*. 8:746920.
34. Kaissling B, Lehir M, Kriz W. (2013). Renal epithelial injury and fibrosis. *Biochim Biophys Acta*. 1832(7):931-939.
35. Hewitson TD, Smith ER. (2021). A Metabolic Reprogramming of Glycolysis and Glutamine Metabolism Is a Requisite for Renal Fibrogenesis-Why and How? *Front Physiol*. 12:645857.
36. Lakshmi SP, Reddy AT, Reddy RC. (2017). Transforming growth factor β suppresses peroxisome proliferator-activated receptor γ expression via both SMAD binding and novel TGF- β inhibitory elements. *Biochem J*. 474(9):1531-1546.
37. Meng XM, Nikolic-Paterson DJ, Lan HY. (2016). TGF- β : the master regulator of fibrosis. *Nat Rev Nephrol*. 12(6):325-338.
38. Para R, Romero F, George G, Summer R. (2019). Metabolic Reprogramming as a Driver of Fibroblast Activation in Pulmonary Fibrosis. *Am J Med Sci*. 357(5):394-398.
39. Nigdelioglu R, Hamanaka RB, Meliton AY, O'Leary E, Witt LJ, Cho T, et al. (2016). Transforming Growth Factor (TGF)- β Promotes de Novo Serine Synthesis for Collagen Production. *J Biol Chem*. 291(53):27239-27251.
40. Bernard K, Logsdon NJ, Ravi S, Xie N, Persons BP, Rangarajan S, et al. (2015). Metabolic Reprogramming Is Required for Myofibroblast Contractility and Differentiation. *J Biol Chem*. 290(42):25427-25438.
41. Selvarajah B, Azuelos I, Platé M, Guillotin D, Forty EJ, Contento G, et al. (2019). mTORC1 amplifies the ATF4-dependent de novo serine-glycine pathway to supply glycine during TGF- β 1-induced collagen biosynthesis. *Sci Signal*. 12(582):eaav3048.
42. Chen Z, Liu M, Li L, Chen L. (2018). Involvement of the Warburg effect in non-tumor diseases processes. *J Cell Physiol*. 233(4):2839-2849.
43. Tan VP, Miyamoto S. (2015). HK2/hexokinase-II integrates glycolysis and autophagy to confer cellular protection. *Autophagy*. 11(6):963-964.
44. Calvier L, Chouvarine P, Legchenko E, Hoffmann N, Geldner J, Borchert P, et al. (2017). PPAR γ Links BMP2 and TGF β 1 Pathways in Vascular Smooth Muscle Cells, Regulating Cell Proliferation and Glucose Metabolism. *Cell Metab*. 25(5):1118.e7-1134.e7.
45. Baumann B, Hayashida T, Liang X, Schnaper HW. (2016). Hypoxia-inducible factor-1 α promotes glomerulosclerosis and regulates COL1A2 expression through interactions with Smad3. *Kidney Int*. 90(4):797-808.
46. Zhao X, Psarianos P, Ghorraie LS, Yip K, Goldstein D, Gilbert R, et al. (2019). Metabolic regulation of dermal fibroblasts contributes to skin extracellular matrix homeostasis and fibrosis. *Nat Metab*. 1(1):147-157.
47. Shen P, Deng X, Chen Z, Ba X, Qin K, Huang Y, et al. (2021). SIRT1: A Potential Therapeutic Target in Autoimmune Diseases. *Front Immunol*. 12:779177.
48. Huang K, Li R, Wei W. (2018). Sirt1 activation prevents anti-Thy 1.1 mesangial proliferative glomerulonephritis in the rat through the Nrf2/ARE pathway. *Eur J Pharmacol*. 832:138-144.
49. Umino H, Hasegawa K, Minakuchi H, Muraoka H, Kawaguchi T, Kanda T, et al. (2018). High Basolateral Glucose Increases Sodium-Glucose Cotransporter 2 and Reduces Sirtuin-1 in Renal Tubules through Glucose Transporter-2 Detection. *Sci Rep*. 8(1):6791.
50. Packer M. (2022). Critical Reanalysis of the Mechanisms Underlying the Cardiorenal Benefits of SGLT2 Inhibitors and Reaffirmation of the Nutrient Deprivation Signaling/Autophagy Hypothesis. *Circulation*. 146(18):1383-1405.
51. Sharaf El Din UAA, Salem MM, Abdulazim DO. (2022). Sodium-glucose cotransporter 2 inhibitors as the first universal treatment of chronic kidney disease. *Nefrologia (Engl Ed)*. 42(4):390-403.
52. McMahon S, Charbonneau M, Grandmont S, Richard DE, Dubois CM. (2006). Transforming growth factor beta1 induces hypoxia-inducible factor-1 stabilization through selective inhibition of PHD2 expression. *J Biol Chem*. 281(34):24171-24181.
53. Deng W, Ren Y, Feng X, Yao G, Chen W, Sun Y, et al. (2014). Hypoxia inducible factor-1 alpha promotes mesangial cell proliferation in lupus nephritis. *Am J Nephrol*. 40(6):507-515.

54. Hung TW, Liou JH, Yeh KT, Tsai JP, Wu SW, Tai HC, et al. (2013). Renal expression of hypoxia inducible factor-1 α in patients with chronic kidney disease: a clinicopathologic study from nephrectomized kidneys. *Indian J Med Res.* 137(1):102-110.
55. Peters LJF, Floege J, Biessen EAL, Jankowski J, van der Vorst EPC. (2020). MicroRNAs in Chronic Kidney Disease: Four Candidates for Clinical Application. *Int J Mol Sci.* 21(18):6547.
56. Trionfini P, Benigni A. (2017). MicroRNAs as Master Regulators of Glomerular Function in Health and Disease. *J Am Soc Nephrol.* 28(6):1686-1696.
57. Wang G, Kwan BC, Lai FM, Chow KM, Li PK, Szeto CC. (2011). Elevated levels of miR-146a and miR-155 in kidney biopsy and urine from patients with IgA nephropathy. *Dis Markers.* 30(4):171-179.
58. Zhang W, Li X, Tang Y, Chen C, Jing R, Liu T. (2020). miR-155-5p Implicates in the Pathogenesis of Renal Fibrosis via Targeting SOCS1 and SOCS6. *Oxid Med Cell Longev.* 2020:6263921.
59. Gomez IG, Grafals M, Portilla D, Duffield JS. (2013). MicroRNAs as potential therapeutic targets in kidney disease. *J Formos Med Assoc.* 112(5):237-243.
60. Wheeler DC, Jongs N, Stefansson BV, Chertow GM, Greene T, Hou FF, et al. (2022). Safety and efficacy of dapagliflozin in patients with focal segmental glomerulosclerosis: a prespecified analysis of the dapagliflozin and prevention of adverse outcomes in chronic kidney disease (DAPA-CKD) trial. *Nephrol Dial Transplant.* 37(9):1647-1656.
61. Anders HJ, Peired AJ, Romagnani P. (2022). SGLT2 inhibition requires reconsideration of fundamental paradigms in chronic kidney disease, 'diabetic nephropathy', IgA nephropathy and podocytopathies with FSGS lesions. *Nephrol Dial Transplant.* 37(9):1609-1615.
62. Wang H, Li T, Sun F, Liu Z, Zhang D, Teng X, et al. (2022). Safety and efficacy of the SGLT2 inhibitor dapagliflozin in patients with systemic lupus erythematosus: a phase I/II trial. *RMD Open.* 8(2):e002686.
63. Säemann M, Kronbichler A. (2022). Call for action in ANCA-associated vasculitis and lupus nephritis: promises and challenges of SGLT-2 inhibitors. *Ann Rheum Dis.* 81(5):614-617.
64. Gyimesi G, Pujol-Giménez J, Kanai Y, Hediger MA. (2020). Sodium-coupled glucose transport, the SLC5 family, and therapeutically relevant inhibitors: from molecular discovery to clinical application. *Pflugers Arch.* 472(9):1177-1206.
65. Onishi A, Fu Y, Patel R, Darshi M, Crespo-Masip M, Huang W, et al. (2020). A role for the tubular Na⁺-H⁺-exchanger NHE3 in the natriuretic effect of the SGLT2 inhibitor empagliflozin. *Am J Physiol Renal Physiol.* 319(4):F712-F728.
66. Packer M. (2021). Mechanisms Leading to Differential Hypoxia-Inducible Factor Signaling in the Diabetic Kidney: Modulation by SGLT2 Inhibitors and Hypoxia Mimetics. *Am J Kidney Dis.* 77(2):280-286.
67. Basu D, Huggins LA, Scerbo D, Obunike J, Mullick AE, Rothenberg PL, Di Prospero NA, et al. (2018). Mechanism of Increased LDL (Low-Density Lipoprotein) and Decreased Triglycerides With SGLT2 (Sodium-Glucose Cotransporter 2) Inhibition. *Arterioscler Thromb Vasc Biol.* 38(9):2207-2216.
68. Packer M. (2020). Mutual Antagonism of Hypoxia-Inducible Factor Isoforms in Cardiac, Vascular, and Renal Disorders. *JACC Basic Transl Sci.* 5(9):961-968.
69. DeFronzo RA, Hompesch M, Kasichayanula S, Liu X, Hong Y, Pfister M, et al. (2013). Characterization of renal glucose reabsorption in response to dapagliflozin in healthy subjects and subjects with type 2 diabetes. *Diabetes Care.* 36(10):3169-3176.
70. Packer M. (2020). Role of Impaired Nutrient and Oxygen Deprivation Signaling and Deficient Autophagic Flux in Diabetic CKD Development: Implications for Understanding the Effects of Sodium-Glucose Cotransporter 2-Inhibitors. *J Am Soc Nephrol.* 31(5):907-919.
71. Zhou J, Zhu J, Yu SJ, Ma HL, Chen J, Ding XF, et al. (2020). Sodium-glucose co-transporter-2 (SGLT-2) inhibition reduces glucose uptake to induce breast cancer cell growth arrest through AMPK/mTOR pathway. *Biomed Pharmacother.* 132:110821.

72. Kogot-Levin A, Hinden L, Riahi Y, Israeli T, Tirosh B, Cerasi E, et al. (2020). Proximal Tubule mTORC1 Is a Central Player in the Pathophysiology of Diabetic Nephropathy and Its Correction by SGLT2 Inhibitors. *Cell Rep.* 32(4):107954.
73. Cassis P, Locatelli M, Cerullo D, Corna D, Buelli S, Zanchi C, et al. (2018). SGLT2 inhibitor dapagliflozin limits podocyte damage in proteinuric nondiabetic nephropathy. *JCI Insight.* 3(15):e98720.
74. Miyata KN, Zhang SL, Chan JSD. (2021). The Rationale and Evidence for SGLT2 Inhibitors as a Treatment for Nondiabetic Glomerular Disease. *Glomerular Dis.* 1(1):21-33.
75. List JF, Whaley JM. (2011). Glucose dynamics and mechanistic implications of SGLT2 inhibitors in animals and humans. *Kidney Int Suppl.* (120):S20-S27.
76. Nicholas SA, Bubnov VV, Yasinska IM, Sumbayev VV. (2011). Involvement of xanthine oxidase and hypoxia-inducible factor 1 in Toll-like receptor 7/8-mediated activation of caspase 1 and interleukin-1 β . *Cell Mol Life Sci.* 68(1):151-158.
77. Pan X, Phanish MK, Baines DL, Dockrell MEC. (2021). High glucose-induced Smad3 linker phosphorylation and CCN2 expression are inhibited by dapagliflozin in a diabetic tubule epithelial cell model. *Biosci Rep.* 41(6):BSR20203947.
78. Kriz W, Lemley KV. (2015). A potential role for mechanical forces in the detachment of podocytes and the progression of CKD. *J Am Soc Nephrol.* 26(2):258-269.
79. Hodgin JB, Bitzer M, Wickman L, Afshinnia F, Wang SQ, O'Connor C, et al. (2015). Glomerular Aging and Focal Global Glomerulosclerosis: A Podometric Perspective. *J Am Soc Nephrol.* 26(12):3162-3178.
80. Romagnani P, Remuzzi G, Glassock R, Levin A, Jager KJ, Tonelli M, et al. (2017). Chronic kidney disease. *Nat Rev Dis Primers.* 3:17088.
81. DeFronzo RA, Hompesch M, Kasichayanula S, Liu X, Hong Y, Pfister M, et al. (2013). Characterization of renal glucose reabsorption in response to dapagliflozin in healthy subjects and subjects with type 2 diabetes. *Diabetes Care.* 36(10):3169-3176.
82. Osataphan S, Macchi C, Singhal G, Chimene-Weiss J, Sales V, Kozuka C, et al. (2019). SGLT2 inhibition reprograms systemic metabolism via FGF21-dependent and -independent mechanisms. *JCI Insight.* 4(5):e123130.
83. Tomita I, Kume S, Sugahara S, Osawa N, Yamahara K, Yasuda-Yamahara M, et al. (2020). SGLT2 inhibition mediates protection from diabetic kidney disease by promoting ketone body-induced mTORC1 inhibition. *Cell Metab.* 32(3):404.e6-419.e6.
84. Song CC, Brown A, Winstead R, Yakubu I, Demehin M, Kumar D, et al. (2020). Early initiation of sodium-glucose linked transporter inhibitors (SGLT-2i) and associated metabolic and electrolyte outcomes in diabetic kidney transplant recipients. *Endocrinol Diabetes Metab.* 4(2):e00185.
85. AlKindi F, Al-Omary HL, Hussain Q, Al Hakim M, Chaaban A, Boobes Y. (2020). Outcomes of SGLT2 Inhibitors Use in Diabetic Renal Transplant Patients. *Transplant Proc.* 52(1):175-178.
86. Shuster S, Al-Hadhrami Z, Moore S, Awad S, Shamseddin MK. (2022). Use of Sodium-Glucose Cotransporter-2 Inhibitors in Renal Transplant Patients With Diabetes: A Brief Review of the Current Literature. *Can J Diabetes.* 46(2):207-212.