

## Use of the Endo Retractor II © in laparoscopic Colon Surgery

Pérez Lara FJ<sup>1</sup>, Hernández González JM<sup>1</sup>, Hernández Carmona JM<sup>1</sup>, Oliva Muñoz H<sup>2</sup>

<sup>1</sup>Service of Surgery, Antequera Hospital, Málaga

<sup>2</sup>Chief of Surgery Service. Surgery Service, Antequera Hospital, Málaga

**Corresponding Author:** Francisco Javier Pérez Lara, Digestive Surgeon. Antequera Hospital Avda Poeta Muñoz Rojas sn,

**Tel:** 637322133; **Email:** javinewyork@hotmail.com

**Received Date:** 29 Dec 2017

**Accepted Date:** 02 Jan 2018

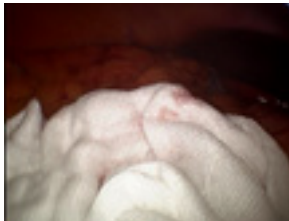
**Published Date:** 04 Jan 2018

**Copyright** © 2018 Pérez Lara FJ

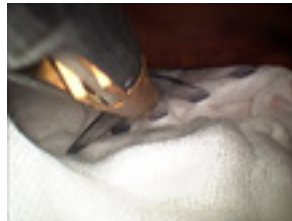
**Citation:** Pérez Lara FJ, Hernández González JM, Hernández Carmona JM and Oliva Muñoz H. (2018). Use of the Endo Retractor II © in laparoscopic Colon Surgery. M J Surg. 2(1): 009.

### INTRODUCTION

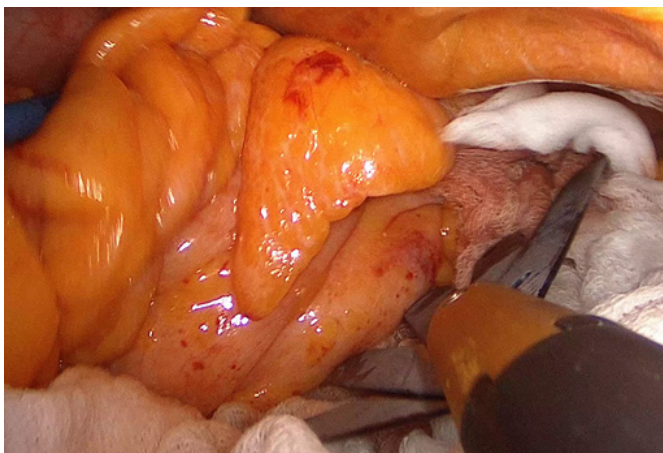
We describe the use of the Endo Retractor II © to perform the separation of the small bowel loops in laparoscopic colonic surgery. The idea is to introduce an open compress into the area occupied by the small intestine in such a way that, resting the separator upon it, we can manoeuvre as if it were a hand, thus allowing us to separate the intestinal package and freeing the area of the mesocolon for intervention.



**Figure 1:** Place an open compress in the area occupied by the small intestine.



**Figure 2:** Introduce the separator.



**Figure 3:** Manoeuvre with the separator resting on the compress to expose the mesosigma.



**Figure 4:** Exposure of the mesosigma.



**Figure 5:** Exposure of the mesorectosigma in the area of the pouch of Douglas.